



# PRODUCT DATASHEET

## LED HIGH BAY 70W 3000K-5000K IP20

Unity P/N

TBD



## GENERAL SPECIFICATIONS

### Description:

1. 120-277V 50-60Hz
2. TBD
3. IP20 rated
4. Eye bolt hanging attachment
5. 100° viewing angle
6. Fast, easy installation

### Features:

1. 70W / 80CRI Luminaire
2. Powder coated aluminum heat sink with ABS shielding and Polycarbonate lens
3. cUL Listed and DLC Certified
4. Overpower, overheat, short, and open circuit protected
5. Long life, up to 36,000 hours based on 25°C ambient temperature and 8 hrs/day operating conditions
6. Three in one dimming function (1-10Vdc or PWM signal)
7. Warranty 1 year

OPERATING ENVIRONMENT	
ITEM	MAX RATING VALUE
Lead Temperature of LED	<85°C
Storage Temperature Range	-30°~ +70°C
Operating Temperature Range	-30°~ +50°C
LED Lifetime - L70	36,000 Hours

### GENERAL SPECIFICATIONS

3000K	UNIT	MIN	TYPICAL	MAX	REMARKS
AC Voltage	V	100	-	277	Full voltage
Frequency	Hz	50	-	60	-
Power Consumption	W	63	70	77	-
Power Factor	-	0.9	0.95	-	-
Driving current to LED	mA	59	65	71	-
CCT	K	2870	3045	3220	ANSI C78.377
CRI	-	78	80	85	-
THD	%	-	15	25	-
Luminous Flux	lm	5490	6090	-	-
Viewing Angle	degree	90	100	-	-

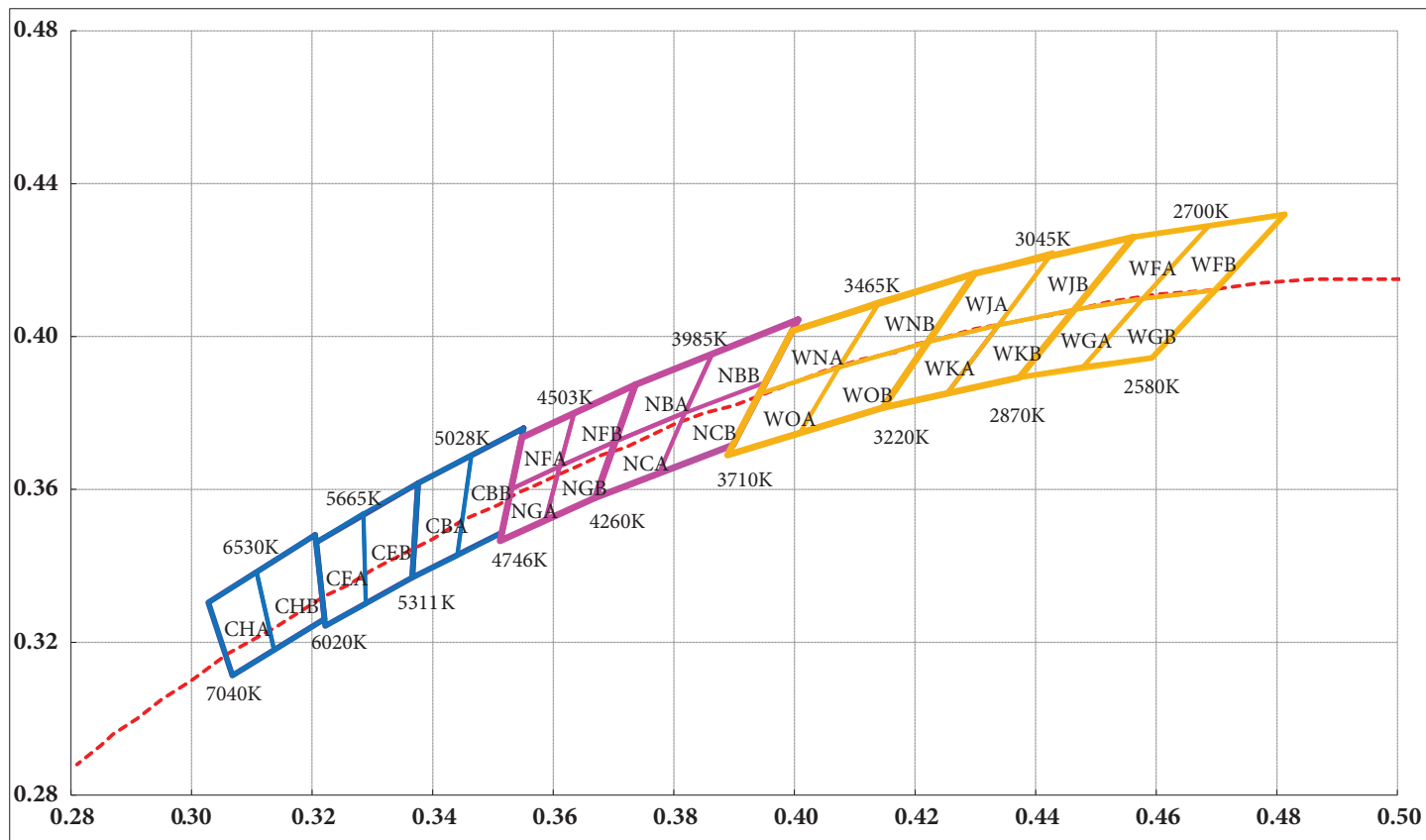
4000K	UNIT	MIN	TYPICAL	MAX	REMARKS
AC Voltage	V	100	-	277	Full voltage
Frequency	Hz	50	-	60	-
Power Consumption	W	63	70	77	-
Power Factor	-	0.9	0.95	-	-
Driving current to LED	mA	59	65	71	-
CCT	K	3710	3985	4260	ANSI C78.377
CRI	-	78	80	85	-
THD	%	-	15	25	-
Luminous Flux	lm	5860	6510	-	-
Viewing Angle	degree	90	100	-	-

5000K	UNIT	MIN	TYPICAL	MAX	REMARKS
AC Voltage	V	100	-	277	Full voltage
Frequency	Hz	50	-	60	-
Power Consumption	W	63	70	77	-
Power Factor	-	0.9	0.95	-	-
Driving current to LED	mA	59	65	71	-
CCT	K	2870	3045	3220	ANSI C78.377
CRI	-	78	80	85	-
THD	%	-	15	25	-
Luminous Flux	lm	5490	6090	-	-
Viewing Angle	degree	90	100	-	-

\* UMI maintains a tolerance of +/- 5% on flux, power measurement and CCT, and +/- 2 on CRI measurements.

\* All characteristics are measured after 0.5 hour heat balance.

### CCT BINNING DETAILS

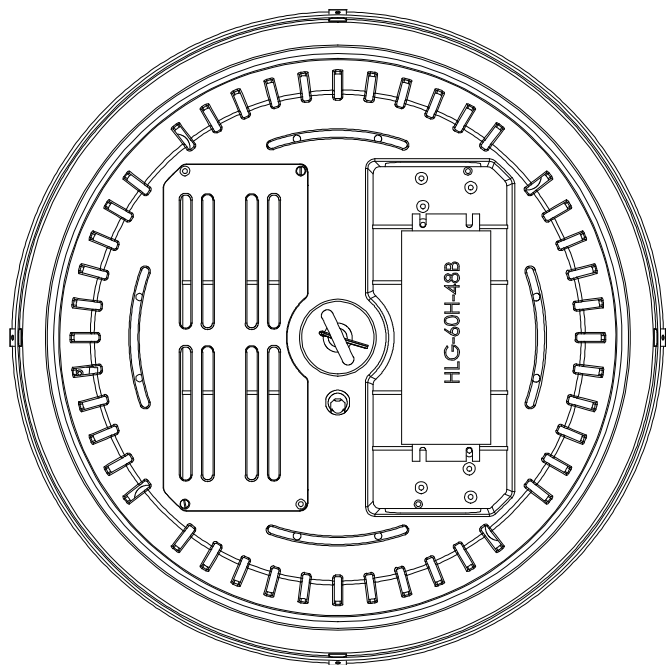
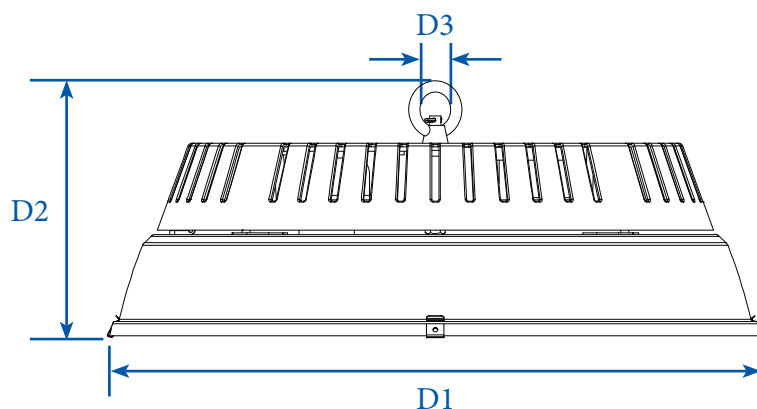


### Color Coordinate

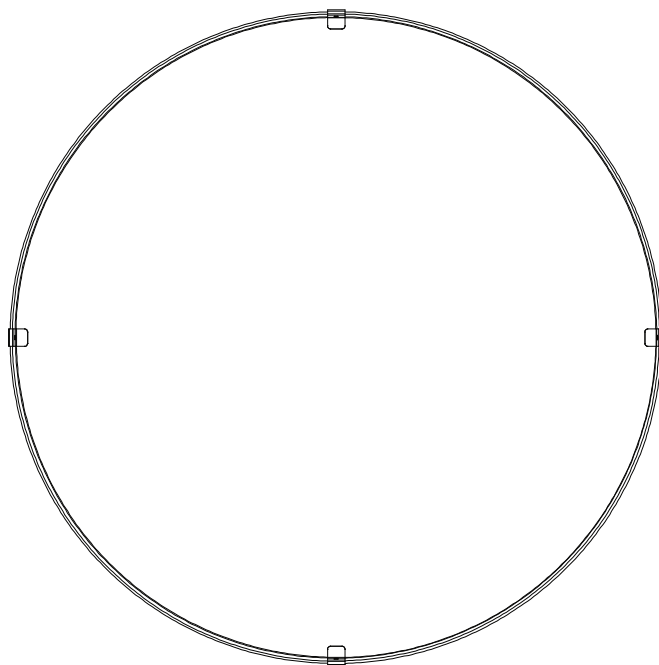
Bin Code	I		II		III		IV		Range
	x	y	x	y	x	y	x	y	
3000K	.4299	.4165	.4147	.3814	.4373	.3893	.4562	.4260	3045 ± 175
4000K	.3736	.3874	.3670	.3578	.3898	.3716	.4006	.4044	3985 ± 275
5000K	.3376	.3616	.3366	.3369	.3515	.3487	.3551	.3760	5028 ± 283

### MECHANICAL CHARACTERISTICS

ITEM	UNIT	MIN	TYPICAL	MAX	REMARK
Diameter (D1)	in	-	ø17.72	ø17.83	-
Height (D2)	in	-	7.00	7.20	-
Eyebolt Diameter (D3)	in	-	ø1.00	-	-
AC Cable Length(D4)	in	4.33	4.72	-	-
Ground Wire Length(D5)	in	9.06	9.45	-	-
Weight	lb	-	7.5	7.72	-



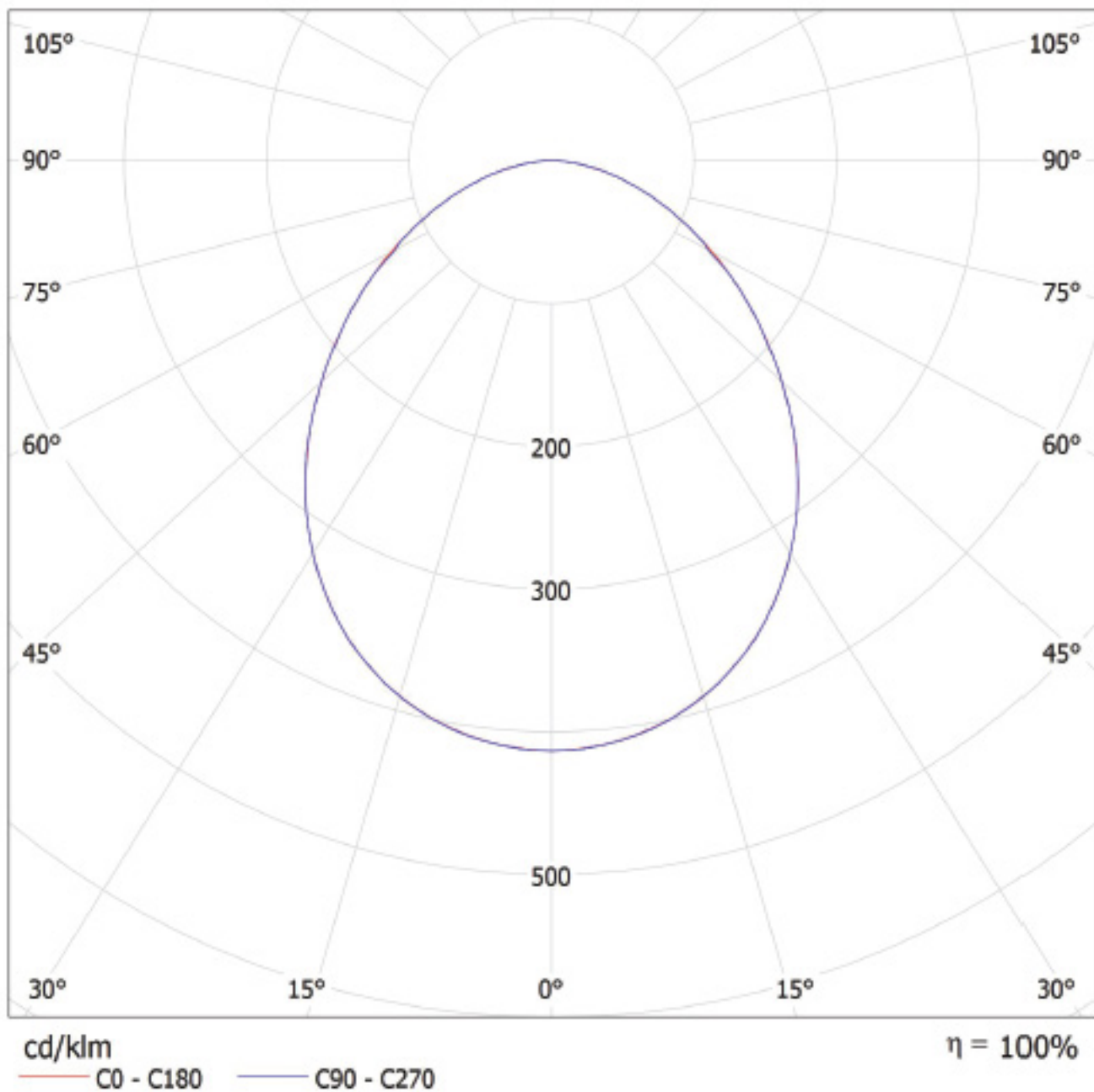
Top View



Bottom View

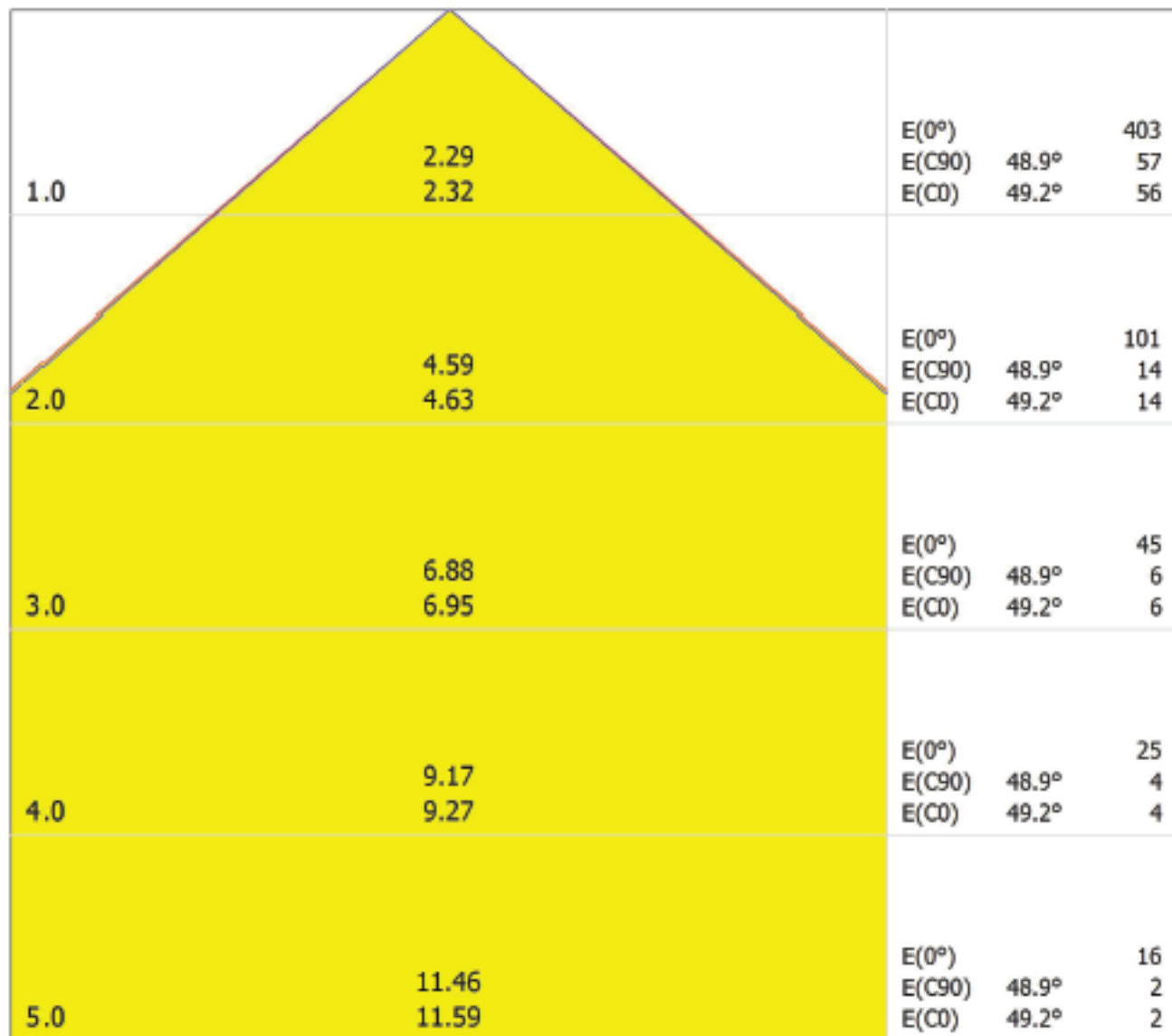
### LUMINOUS INTENSITY DISTRIBUTION

@ Ta= 25 / 120Vac /60Hz



### LUX CONE DIAGRAM

@ Ta= 25 / 120Vac /60Hz



Distance [m]      Cone Diameter [m]

— C0 - C180 (Half-value Angle: 98.4°)

— C90 - C270 (Half-value Angle: 97.8°)

Illuminance [fc]

## INSTALLATION INSTRUCTIONS

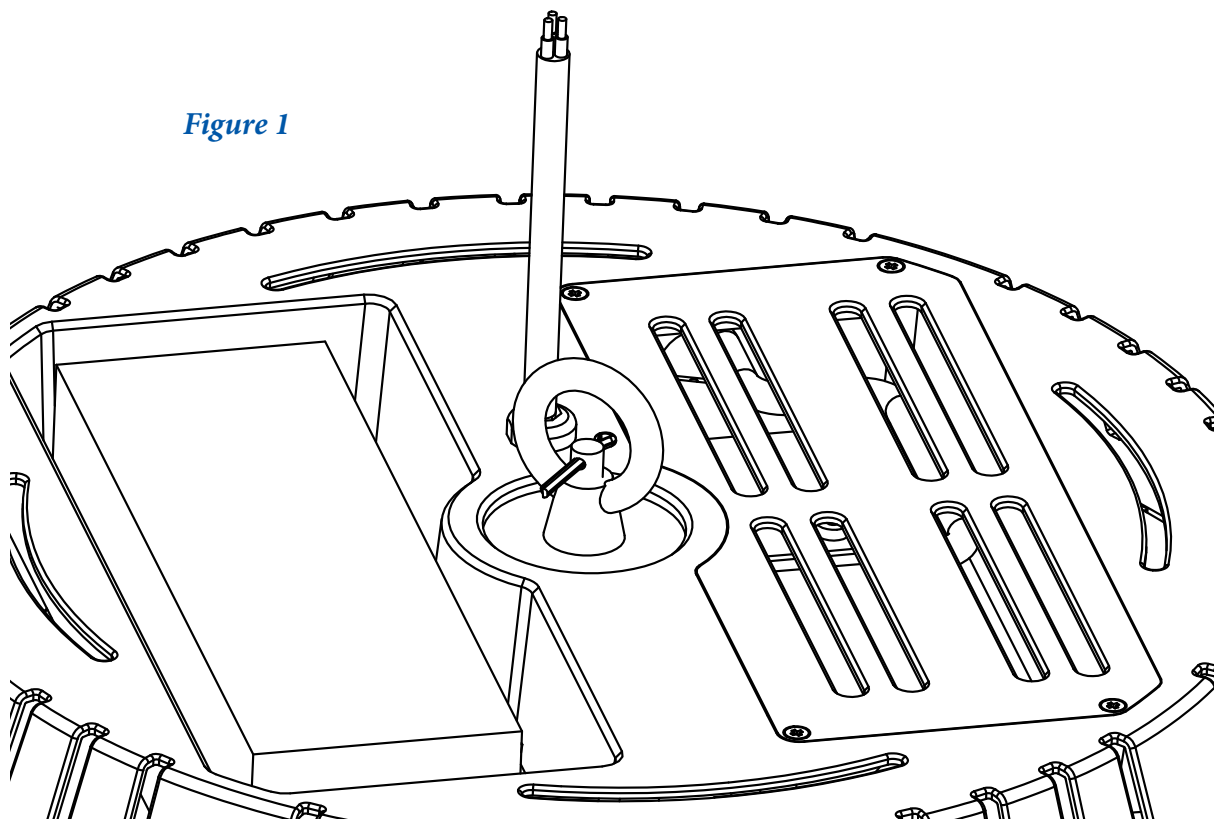
### Notes:

- The mounting method, hardware and equipment required to install the IP20 High Bay is by others. Feit Electric does not supply mounting hardware or make any mounting recommendations.
- The luminaire is IP20 rated and suitable for dry locations only.
- The luminaire is wired to accept 120-277V 50-60Hz.
- The IP20 High Bay luminaire is intended to be mounted in a location to provide lighting over large areas generally where the ceiling height prevents constant maintenance. The warranty will become void if the fixture becomes non-operational due to installing or using the luminaire in an unintended manor.

**IMPORTANT – RISK OF SHOCK OR POSSIBLE DEATH.** Ensure incoming power is shut off before beginning installation.

1. Secure mounting hardware to ceiling (by others) at the location in which the luminaire is to be mounted.
2. Secure suspension system through the eye bolt provided on the top of the fixture (figure 1).  
NOTE: The suspension system must accommodate the weight of the fixture plus any seismic factors dictated by local regulations. Consult a Structural Engineer with any concerns.
3. To ensure proper operation, make sure fixture is level to the finished floor.
4. Attach any additional safety, or stabilization cables (by others) if needed.

*Figure 1*



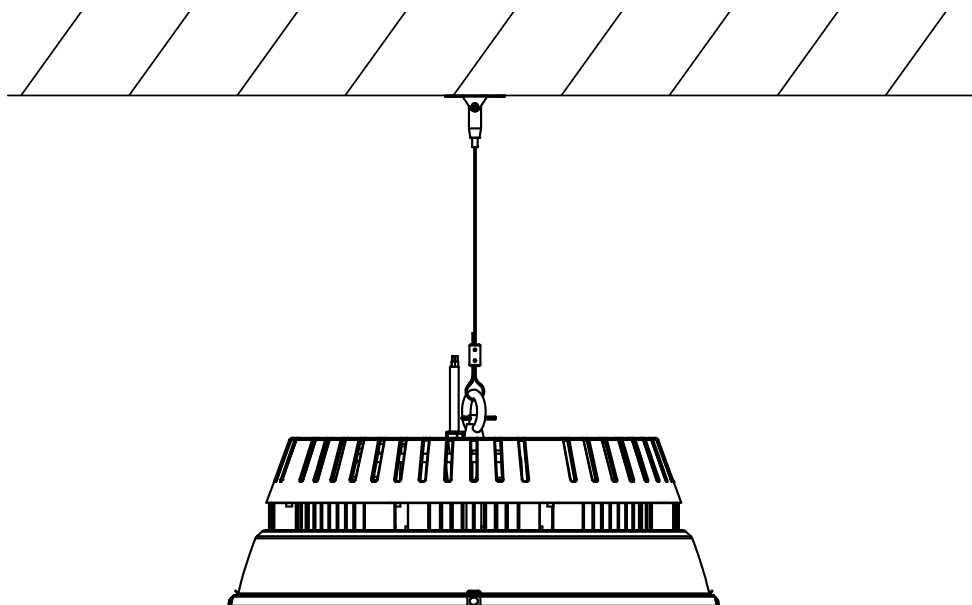


## INSTALLATION INSTRUCTIONS

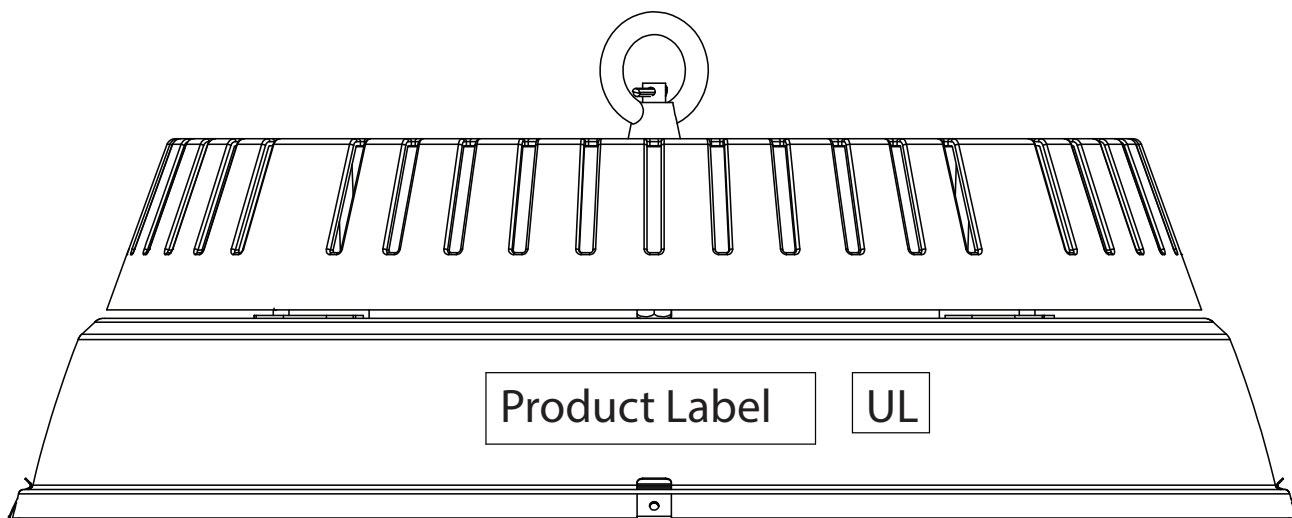
5. Feed the AC power cord into a mounted junction box (by others) per NEC Codes and wire per the instructions below (figure 2).
  - a. Attach the brown wire to the incoming line voltage wire
  - b. Attach the blue wire to the incoming common wire
  - c. Attach the green/yellow (or green with yellow striped) wire to the building ground wire
6. Turn power on to check that the luminaire is operating properly.

*Figure 2*

Supply Voltage 100~277VAC / 50-60Hz	L	Brown
	N	Blue
	G	Green/Yellow
		Green/Yellow



## LABEL LOCATIONS



## LOT NUMBER

The lot number is comprised by the following characters:

**FFF-YYWW**

**FFF** - Factory code

**YY** - Year code (6 for 2016, 17 for 2017, etc.)

**WW** - Weekly code